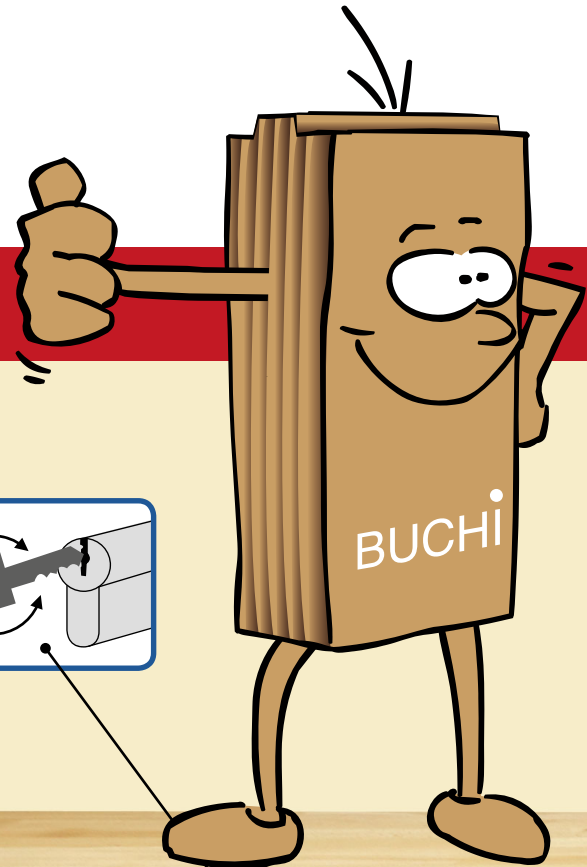
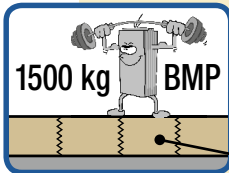


Durch Piktogramme

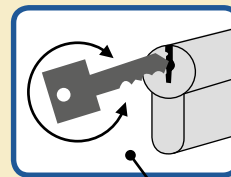
leicht erklärt:



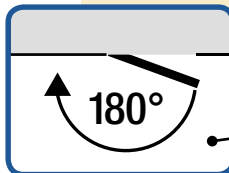
max. Traglast der Werkbank (mit **Buche-Massiv-Platte -BMP**)
max. load of workbench (with solid beech top -BMP)
max. charge d'établi (avec plateau en hêtre massif - BMP)



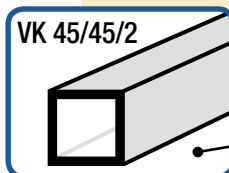
Zentralverschluss
central lock
fermeture centralisée



Türöffnungswinkel
door opening width
angle d'ouverture de porte



Fußgestell
legs
piétements



Einzelauszugssperre
standard pull-out block
blocage d'ouverture d'un seul tiroir à la fois

