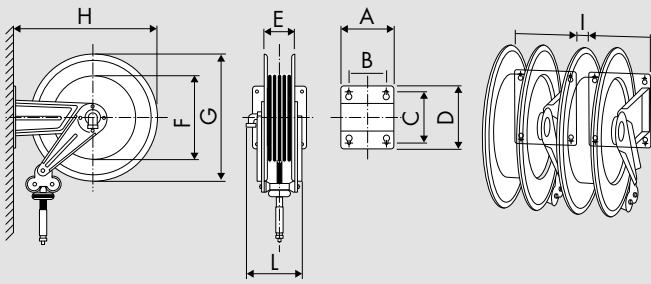


# Overall dimensions (mm)



Series	A	B	C	D	E	F	G	H	I	L	1-m <sup>3</sup>	Kg*
270	186	140	196	226	110	240	300	320	20	210	0,037	from 10 to 13
300	186	140	196	226	110	280	350	365	20	215	0,045	from 11 to 16
350	186	140	196	226	110	280	390	410	20	215	0,068	from 13 to 19,5
430	186	140	196	226	115	261	450	460	20	215	0,098	from 16 to 22,5

\* Packing is included in the weight

## Hose reel installation

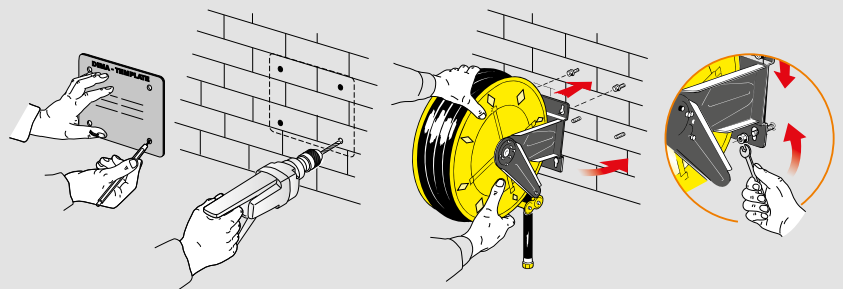
The adjustable arms can be easily repositioned according to needs

Standard wall installation	Optional wall installation	Bench installation	Ceiling installation
<p>1</p>	<p>2</p>	<p>3</p>	<p>4</p>
<p>To switch from 1 to 2 configuration is necessary to follow this simple procedure</p>			
Starting position	Unlock fixing arms screws	Arms rotation	Final position
			<p>Hose reel rotation of 180°</p>

## Wall mounting

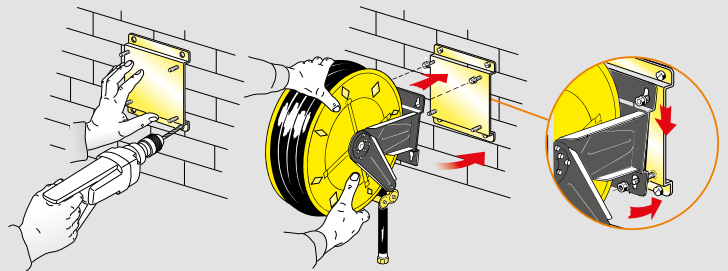
### TEMPLATE

The solid and compact fixed bracket, included with the hose reel, is provided with four slotted mounting holes for easy and safe installation. Using the template supplied with the hose reel it's easier to mark plugs holes for hose reel fixing.



### WALL BRACKET

On request an additional bracket for a quick installation and disassembly is available. Furthermore this bracket allows installing several hose reels in series. The P/N takes the suffix /SM. For example: 430/10 becomes 430/10/SM.



### SWIVELLING BRACKET

On request a swivelling bracket to make the reel turning 40° to the right and 40° to the left is available. The P/N takes the suffix /SO. For example: 430/10 becomes 430/10/SO.

