



POLAR TORQUE WRENCHES

7700 A DIGITAL ANGLE METER WITH MAGNET

- Digital angle meter for both clockwise and counter-clockwise operation.
- Built-in magnet for easily fastening to any tightening tool.
- Accuracy: $\pm 2\%$ for 90° rotation.
- Acoustic and green/red LED signal at preset angle value.
- Memory function with 9 preset angle values and 50 measurements.
- Battery life (continuous operation): 24 hrs.
- Operating temperature: $-10^\circ\text{C} \sim 60^\circ\text{C}$. Storage temperature: $-20^\circ\text{C} \sim 70^\circ\text{C}$.
- Humidity: Up to 90% non-condensing.
- Supplied with test certificate and storage case.

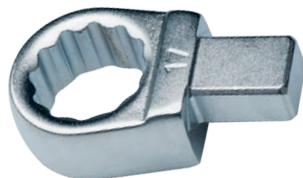
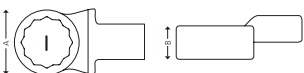


ITEM NO.	5704196+	SCALE	INCREMENTS	RESOLUTION	DISPLAY RANGE	SIZE MM	G	
7700-0001	022161	1-360°	1°	0,1°	1-999°	58x58x41	72	1

! Inserts suitable for torque wrenches model 7300 B and 7200 I (page 111-112).

7801 BOX END METRIC INSERTS

- 9 x 12 mm
- Surface: Chrome plated finish.
- Material: Chrome-vanadium steel



ITEM NO.	5704196+	SIZE mm	A MM	B MM	G	
7801-0007	022413	7	20	8	39	1
7801-0008	022420	8	20	8	39	1
7801-0010	022437	10	20	8	41	1
7801-0011	022444	11	20	8	43	1
7801-0012	022451	12	22	12	53	1
7801-0013	022468	13	22	12	51	1
7801-0014	022475	14	24	12	55	1
7801-0015	022482	15	25	13	56	1
7801-0016	022499	16	27	13	58	1
7801-0017	022505	17	28	13	60	1
7801-0018	022512	18	29	13	61	1
7801-0019	022529	19	31	13	65	1
7801-0021	022536	21	34	15	71	1
7801-0022	022543	22	35	15	72	1

7780 DIGITAL TORQUE MEASUREMENT TESTER

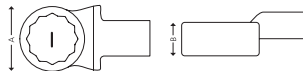
- Torque testing instrument - click type torque wrenches (CW and CCW operations).
- Three operation modes: 1st Peak, Peak and Track.
- Two Torque units: Nm, and ft-lb (7780-0350 also kg-cm and in-lb).
- Acoustic and green/red LED signal at preset torque value.
- Memory function with 10 preset torque values and 2000 measurements.
- Accuracy: $\pm 1\%$ (CW / CCW)
- Digital torque values data output with an USB-lead.
- Operating temperature: $-10^\circ\text{C} \sim 60^\circ\text{C}$. Storage temperature: $-20^\circ\text{C} \sim 70^\circ\text{C}$.
- Supplied with USB-lead, software, test certificate and storage case.



ITEM NO.	5704196+	CAPACITY NM	INCREMENTS NM	MALE HEXAGON MM	KG	
7780-0350	037059	10-350	0.1	1/2"	4,6	1
7780-1000	037066	100-1000	1	27	5,0	1
7780-2000	037073	200-2000	1	27	5,1	1

7803 BOX END METRIC INSERTS

- 14 x 18 mm
- Surface: Chrome plated finish.
- Material: Chrome-vanadium steel



ITEM NO.	5704196+	SIZE MM	A MM	B MM	G	
7803-0013	022727	13	30	12	129	1
7803-0014	022734	14	30	12	129	1
7803-0015	022741	15	30	12	129	1
7803-0016	022758	16	31	12	130	1
7803-0017	022765	17	31	13	134	1
7803-0018	022772	18	31	13	139	1
7803-0019	022789	19	31	12	140	1
7803-0021	022796	21	33	15	152	1
7803-0022	022802	22	35	15	156	1
7803-0024	022819	24	38	15	156	1
7803-0027	022826	27	41	18	200	1
7803-0030	022833	30	45	18	204	1
7803-0032	022840	32	48	18	202	1
7803-0034	022857	34	51	19	223	1
7803-0036	022864	36	53	19	218	1
7803-0041	022871	41	60	19	228	1